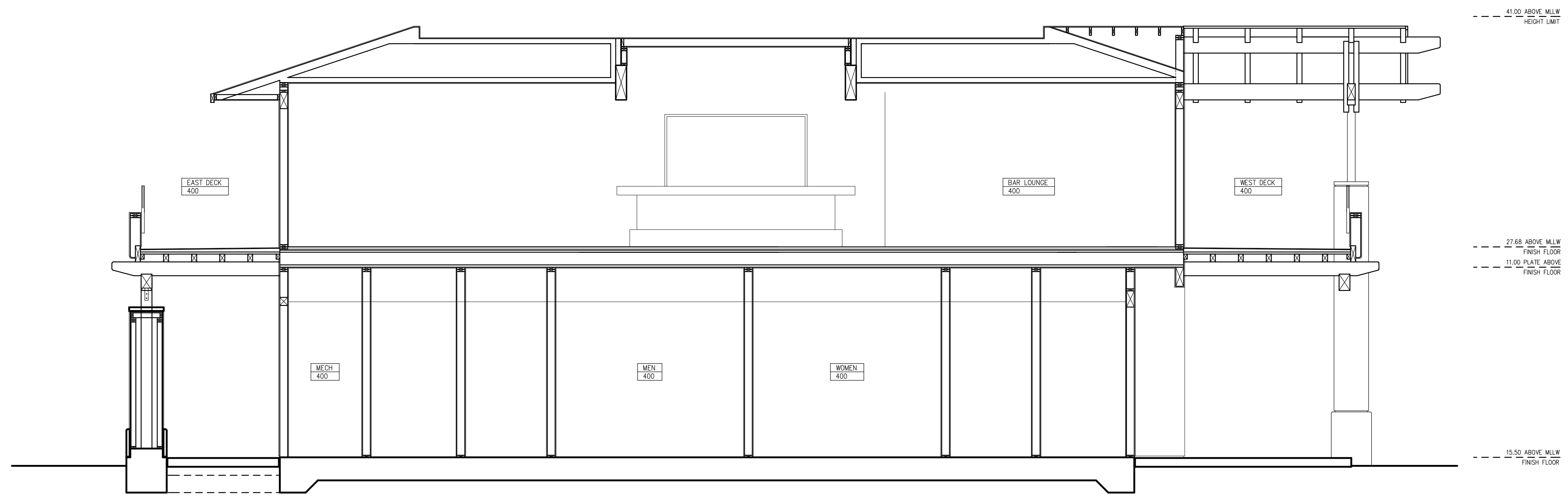
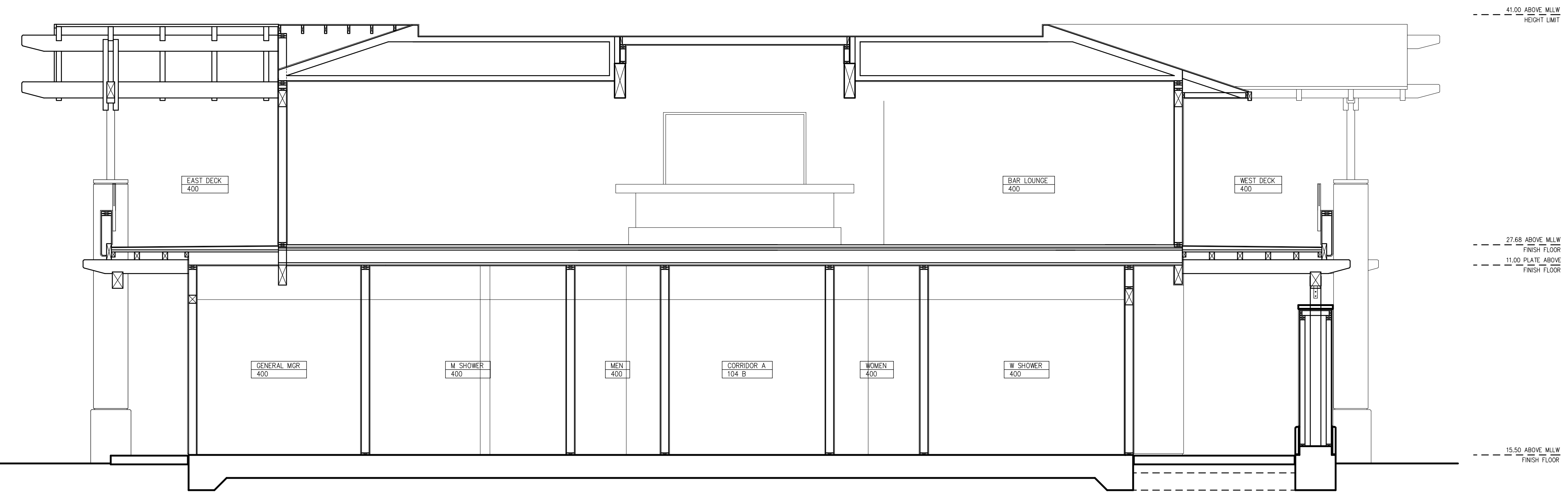


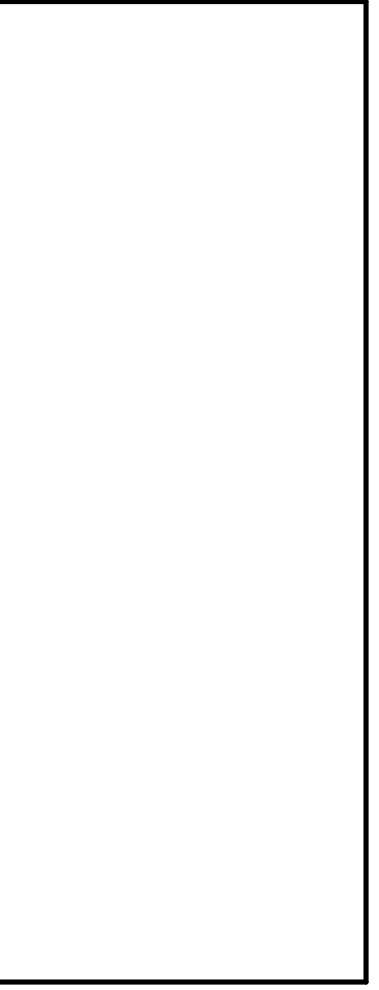
REVISIONS	BY



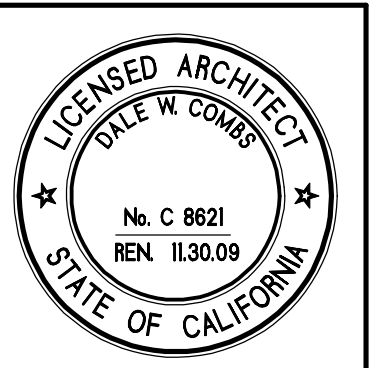
01 SECTION 1-1  
1/4" = 1'-0"



02 SECTION 2-2  
1/4" = 1'-0"



*Silver Gate Yacht Club*  
CLUBHOUSE SECTIONS



**CAPA**  
ARCHITECTURE  
Dale W. Combs AIA  
7777 ALVARADO ROAD • SUITE 281  
LA MESA • CALIFORNIA • 91941  
TEL 619-481-4350 • FAX 619-461-4395

DRAWN :      CHECKED :  
DATE : APRIL 8, 2008  
SCALE : 1/4" = 1'-0"  
JOB NO. :  
SHEET

**AA3.0**  
OF      SHEETS